

DMB Type



- COUPLINGS
- ELECTROMAGNETIC CLUTCHES & BRAKES
- TORQUE LIMITERS



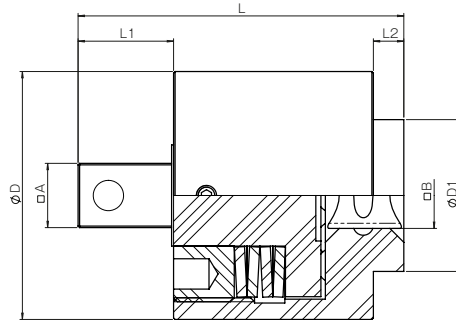
The DMB torque limiter is a factory torque set equipment, providing an over torque safety function without needing any maintenance during lifetime. In standard version it is designed with two connection for square drives in 3/8" and 1/2". As the DMB is a VMA developed and produced product the possibility for adaption on customer needs is very high. Special torque requirements as well as customized connections can be offered on request.

Specifications

Model	Torque min. [N-m]	Torque max. [N-m]	Drive A Square	Drive B Square	Mass [kg]
DMB-1	3	30	3/8"	3/8"	0.22
DMB-2	30	90	1/2"	1/2"	0.6

• Rotation speed depending on application. Contact Miki Pulley for assistance.

Dimensions



Unit [mm]

Model	A	B	L	L1	L2	ø D	ø D1
DMB-1	3/8"	3/8"	46	14	7	36	22
DMB-2	1/2"	1/2"	65	17.5	6	49	30

MODELS

- TT
- DMB

How to Place an Order

DMB-1-10NM

