

ASK - Datasheet

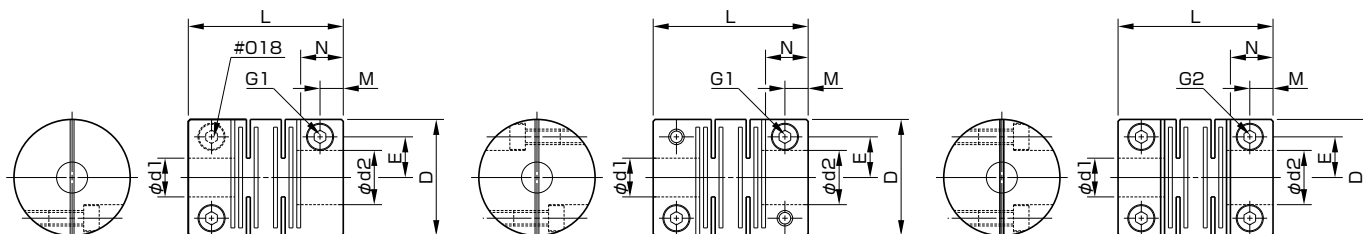
Specifications (Aluminum alloy - BB & BBH)

Model	Type		Torque		Misalignment			Max. rotation speed [min ⁻¹]	Torsional stiffness [N-m/rad]	Moment of inertia [kg-m ²]	Mass [kg]
	BB [Clamping hub]	BBH [Removable clamping hub]	Rated [N-m]	Maximum [N-m]	Parallel [mm]	Angular [°]	Axial [mm]				
ASK 018	●	—	1	2	0.15	0.5	0.2	11500	103	0.45 × 10 ⁻⁶	0.008
ASK 020	●	—	1.5	3	0.1	1	0.1	11500	407	1.05 × 10 ⁻⁶	0.017
ASK 022	●	—	1	2	0.15	1	0.1	11500	690	1.15 × 10 ⁻⁶	0.019
ASK 025	●	—	3	6	0.1	1	0.1	10000	533	2.39 × 10 ⁻⁶	0.024
ASK 030	●	●	4	8	0.1	0.85	0.1	8000	868	6.80 × 10 ⁻⁶	0.049
ASK 040	●	●	9	18	0.15	0.85	0.1	7500	3767	27.9 × 10 ⁻⁶	0.110
ASK 050	●	●	15	30	0.15	0.7	0.1	7000	7196	89.7 × 10 ⁻⁶	0.210
ASK 060	●	●	32	65	0.15	0.7	0.15	6000	12750	253.7 × 10 ⁻⁶	0.420
ASK 070	●	●	60	120	0.1	0.33	0.1	5000	66768	506.6 × 10 ⁻⁶	0.648
ASK 080	●	●	85	170	0.1	0.33	0.1	4000	78189	962.4 × 10 ⁻⁶	0.858
ASK 100	●	●	150	300	0.1	0.33	0.1	3500	278893	2826 × 10 ⁻⁶	1.632

Specifications (Steel - BB/stainless steel - BB & BBH)

Model	Type		Torque		Misalignment			Max. rotation speed [min ⁻¹]	Torsional stiffness [N-m/rad]	Moment of inertia [kg-m ²]	Mass [kg]
	BB [Clamping hub]	BBH [Removable clamping hub]	Rated [N-m]	Maximum [N-m]	Parallel [mm]	Angular [°]	Axial [mm]				
ASK 020	●	—	5	10	0.1	0.5	0.1	11500	1189	2.88 × 10 ⁻⁶	0.046
ASK 025	●	—	7	14	0.1	1	0.1	10000	1558	6.48 × 10 ⁻⁶	0.064
ASK 030	●	●	9	18	0.1	0.85	0.1	8000	2530	18.6 × 10 ⁻⁶	0.134
ASK 040	●	●	15	30	0.15	0.85	0.1	7500	11008	75.8 × 10 ⁻⁶	0.300
ASK 050	●	●	30	60	0.15	0.5	0.1	7000	20995	246 × 10 ⁻⁶	0.577
ASK 060	●	●	55	110	0.15	0.5	0.1	6000	37165	694 × 10 ⁻⁶	1.150
ASK 070	●	●	95	190	0.1	0.3	0.06	5000	196024	1380 × 10 ⁻⁶	1.753
ASK 080	●	●	120	240	0.06	0.3	0.06	4000	229524	2620 × 10 ⁻⁶	2.330
ASK 100	●	●	200	400	0.06	0.3	0.06	3500	821288	7680 × 10 ⁻⁶	4.423

Dimensions



Model	d1 • d2			D	L	M	N	E	G1 Qty – Nominal diameter	G2 Qty – Nominal diameter	Tightening torque of screws [N-m]	Unit [mm]
	Pilot bore	Min.	Max.									
ASK 018	2.5	3	6	18	17	2.5	5	5.5	2-M2.5	—	1.0	
ASK 020	2.5	3	8	20	28	4	8	6.5	2-M2.5	—	1.0	
ASK 022	2.5	3	10	22	20	2.75	5.5	7.2	2-M2.5	—	1.0	
ASK 025	3.5	5	12	25	28	4	8	9	2-M3	—	1.5	
ASK 030	5.5	6	15	30	40	5.5	11	10.5	2-M4	4-M4	3.4	
ASK 040	5.5	6	20	40	48	5.5	11	14	2-M5	4-M5	7.0	
ASK 050	8.5	9	26	50	65	9.5	19	18.5	2-M6	4-M6	14	
ASK 060	9.5	10	30	60	80	12.5	25	21	2-M8	4-M8	27	
ASK 070	14.5	15	38	70	95	12.5	25	25	4-M8	4-M8	27	
ASK 080	22	24	42	80	100	12.5	25	29	4-M8	4-M8	27	
ASK 100	27.5	30	55	100	118	15	30	37	4-M10	4-M10	54	

• Standard bore tolerance H7, further tolerances possible on request.
 • Keyway possible on request.

How to Place an Order

