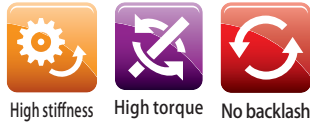


Rigid Couplings STK



Max. rated torque [N·m]	1900
Bore ranges [mm]	φ 6 ~ 50
Operating temperature [°C]	- 40 ~ 175
Drive	Servomotor, induction motor
Applications	Machine tool / semiconductor manufacturing equipment / printing press / packing machine

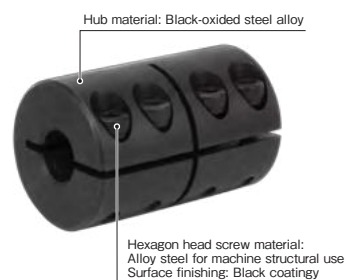
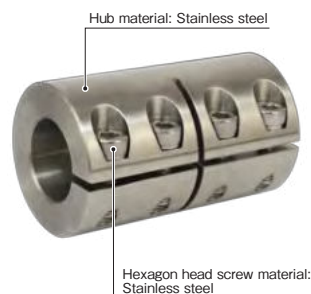
Rigid Couplings for High Torque and Zero Backlash



With exactly aligned shafts, an offset compensation is not necessary, here the rigid coupling or shell coupling is the right solution. This type of coupling is characterized by highest torques and particularly high torsional rigidity. Another plus is the ease of installation.

Structure and Materials

■ STK Sliced



■ STK Split



STK Models

COUPLINGS

ELECTROMAGNETIC
CLUTCHES & BRAKES

TORQUE LIMITERS

SERIES

- Metal Disc Couplings
SERVOFLEX
- Metal Coil Spring Couplings
BAUMANNFLEX
- Cardan Couplings
PARAFLEX
- Sliced Couplings
ASK
- Rigid Couplings
STK
- Jaw Couplings
MIKI PULLEY
STARFLEX
- Jaw Couplings
SPRFLEX
- Dual Rubber Couplings
STEPFLEX
- Oldham Couplings
KSK

MODELS

STK

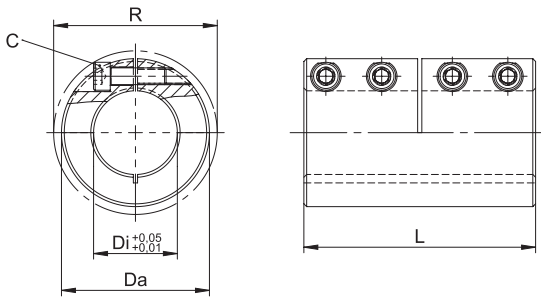
Specifications

Model	Max. torque [N·m]			Tightening torque of screws [N·m]	
	Steel [ST] Sliced/Split	Stainless steel [VA]		Steel [ST]	Stainless steel [VA]
		Sliced [one-piece]	Split [two-piece]		
STK-6	30	12	12	2.1	1.2
STK-8	50	16	18	2.1	1.2
STK-10	100	25	30	5.1	2.9
STK-12	105	32	36	5.1	2.9
STK-14	180	42	67	10.0	5.7
STK-15	190	50	72	10.0	5.7
STK-16	200	60	77	10.0	5.7
STK-17	210	70	79	10.0	5.7
STK-19	300	90	130	17.5	10.0
STK-20	350	100	137	17.5	10.0
STK-25	400	110	171	17.5	10.0
STK-30	475	150	206	17.5	10.0
STK-35	1100	330	438	42.0	24.0
STK-40	1300	400	445	42.0	24.0
STK-50	2200	690	1000	83.0	48.0
STK-60	3000	840	1100	83.0	48.0
STK-70	4000	1500	1600	145.0	82.0
STK-80	5000	1800	1900	145.0	82.0

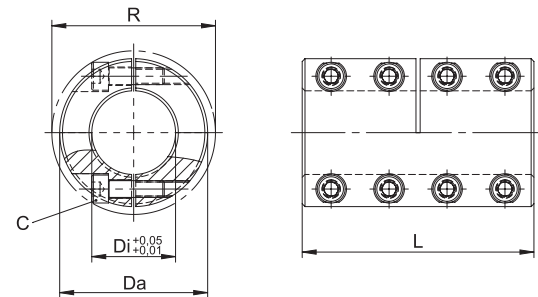
• Max. torque values will only be achieved due proper use (Material and dimensional accuracy of the shaft (recommendation h9), free of grease etc).
• Maximum rpm is depending on material and size.

Dimensions

STK Sliced



STK Split



Unit [mm]

Model	Di	Da	L	R	C	
					Sliced [one-piece]	Split [two-piece]
STK-6	6	18	30	20.0	4-M3	8-M3
STK-8	8	24	35	24.5	4-M3	8-M3
STK-10	10	29	45	32.0	4-M4	8-M4
STK-12	12	29	45	32.0	4-M4	8-M4
STK-14	14	34	50	39.5	4-M5	8-M5
STK-15	15	34	50	39.5	4-M5	8-M5
STK-16	16	34	50	39.5	4-M5	8-M5
STK-17	17	34	50	39.5	4-M5	8-M5
STK-19	19	42	65	47.5	4-M6	8-M6
STK-20	20	42	65	47.5	4-M6	8-M6
STK-25	25	45	75	51.0	4-M6	8-M6
STK-30	30	53	83	58.0	4-M6	8-M6
STK-35	35	67	95	72.0	4-M8	8-M8
STK-40*	40	77	108	77.5	4-M8	8-M8
STK-50*	50	85	124	91.0	4-M10	8-M10
STK-60*	60	100	150	102.0	4-M10	8-M10
STK-70*	70	122	220	—	4-M12	8-M12
STK-80*	80	140	220	—	4-M12	8-M12

*For sliced couplings with these sizes, the slit is on the outside.

How to Place an Order

